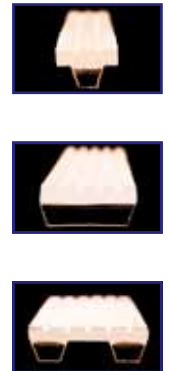
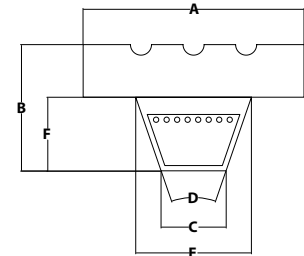
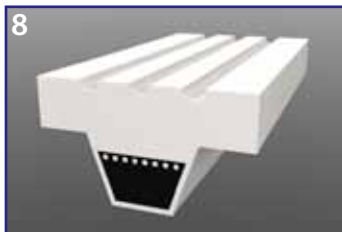
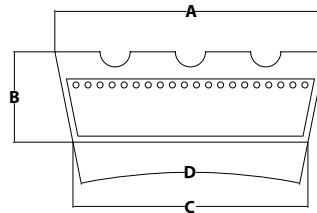
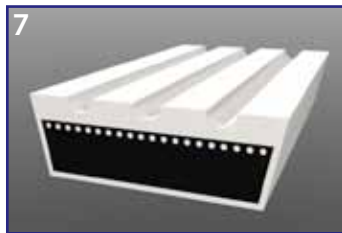
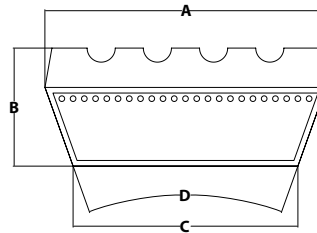
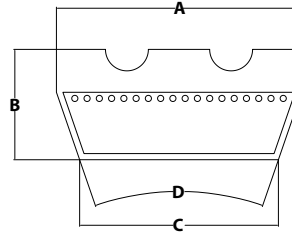
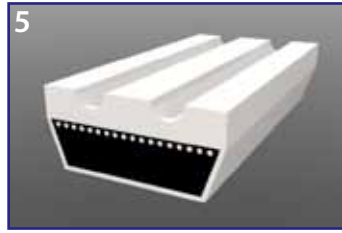


RR Endless

Woodvee Series

Special Profiles



CINGHIA (Belt)	MACCHINA (Machine)	DIMENSIONI (Dim)						PROFILO (Profile)												
		A	B	C	D	E	F	RA	RB	R0	RR	R1	R2	R3	R4	R5	R6	R15	R16	
5	A. COSTA	45	15	40	30									X						
5	TAGLIABUE	40	20	33	30								X							
5	EGURKO	49	20	41	30										X					
5	OLIMPIC	50	15		34									X						
6	GABBIANI	50	19	42	40											X				
6	GABBIANI	50	21	40	40											X				
7	MANEA	45	15	39	25									X						
7	SPANEVELLO-A.COSTA	40	12	33	30									X						
7	SPANEVELLO-SICAR	60	16	52	25											X				
8	A.COSTA	42	24	12	38	22	14					X		X						
8	TAGLIABUE	30	25	9	38	17	11						X							
8	FRIULMAC	28	25	12	38	22	14					X								

RA ROMBO GRANDE NEGATIVO
 RB GRANA DI RISO
 R0 LISCIO
 RR ROMBO PICCOLO NEGATIVO
 R1 LISCIO RETTIFICATO
 R2 DUE CAVE LONGITUDINALI
 R3 TRE CAVE LONGITUDINALI
 R4 QUATTRO CAVE LONGITUDINALI
 R5 CINQUE CAVE LONGITUDINALI
 R6 FRESATURA TRASVERSALE
 R15 PROFILO A NIDO D'APE
 R16 PROFILO TESSUTO IMPRESSIONE TELA GROSSA
 RS PROFILO SPECIALE (A DISEGNO)

RA Large negative diamond square
 RB Negative rice grain patter
 R0 Smooth, unground
 RR Small negative diamond square
 R1 Smooth, ground
 R2 Two longitudinal grooves
 R3 Three longitudinal grooves
 R4 Four longitudinal grooves
 R5 Five longitudinal grooves
 R6 Transversal notches
 R15 Rough top (superrip) pattern
 R16 Coarse fabric pattern
 RS Special profile (Customer drawings)